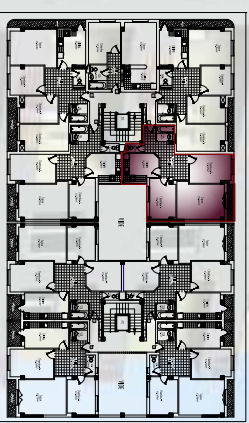


RESIDENCE LE PROGRES

PLAN ETAGE COURANT



LOGEMENT -F3-C-

SURFACE EDD = 74.32m²

DESIGNATION	
SEJOUR	18.04m ²
CHAMBRE-1-	10.76m ²
CHAMBRE-2-	12.57m ²
CUISINE	9.95m ²
S.D.B	2.90m ²
WC	1.62m ²
HALL	13.37m ²

